



48A Matilda Street Huntingdale, WA



Great investment potential!

Set in the heart of Huntingdale, this beautifully presented family residence situated close to all amenities is an opportunity that shouldn't be thought of twice.

This outstanding family residence incorporates the meals and family room plus a stunning gourmet kitchen built with a great sense of space with ample cabinetry. With a low maintenance backyard suited for all year entertainment.

Make this your #1 on your viewing list today!

Features include

- Two spacious bedrooms
- One stylish bathroom
- Stunning kitchen with ample storage
- Light bright dining and meals area
- Split system air Conditioning
- Cosy outdoor area for all year-round outdoor

Price: \$UNDER OFFER, HOME OPEN CANCELLED.

Council Rates: \$1,510.00/year (approx)

Water Rates: \$770.99/year (approx)

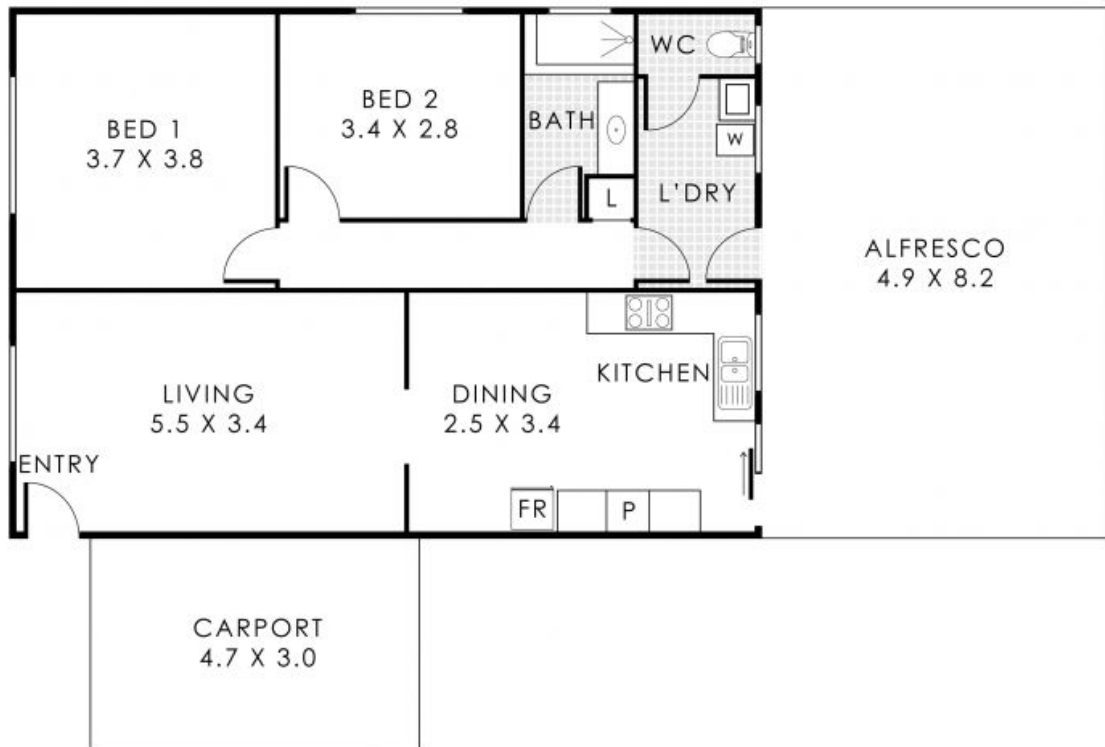


Max Park

0403 038 647

Tim Huynh

0450 435 854



48A Matilda Street, Huntingdale

Internal 83m² | External 40m² | Carport 14m² | Total Area 137m²



This floorplan is for illustration purposes only to show the layout of the property. Whilst every effort has been made to ensure the accuracy of the floor plan, all measurements and total areas do not include or account for wall thickness or roof area under eaves. Citi Creative will not be held liable or responsible for any error, omission, misrepresentation or use of any information shown on the floor plan. Not to be used for any other purpose. www.citicreative.com.au

48A Matilda Street

Huntingdale, WA