



17 Binnia Mews Harrisdale, WA

 4  2  2

Spacious family home in great location!

Set in the heart of Harrisdale, this immaculately presented property is surrounded with a wealth of stylish features impressing all families with no expense spared with four spacious bedrooms, two stylish bathrooms. Additionally, there is a capacious theatre room and a spacious master bedroom with a double walk-in robe and an impressive ensuite. All bedrooms have built in robes adding to the ample storage space provided throughout the home.

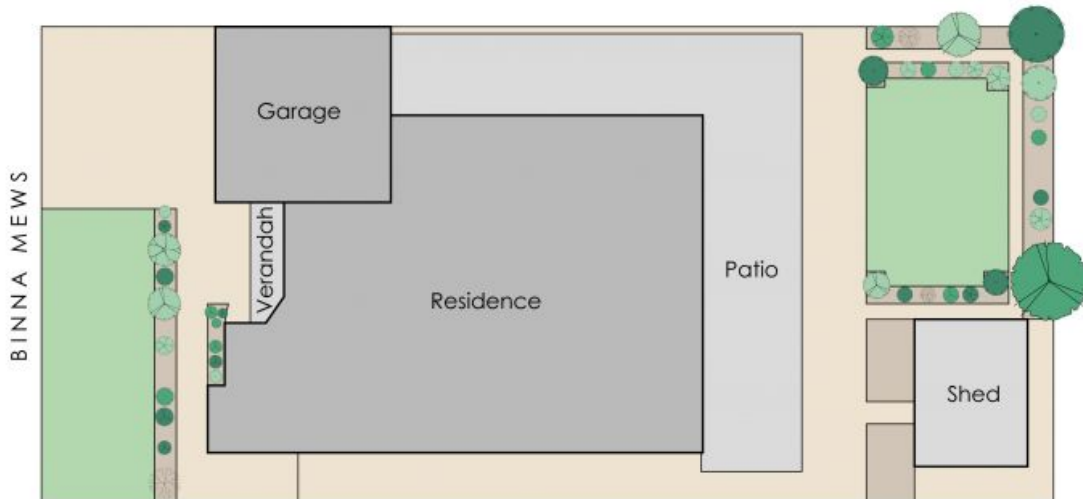
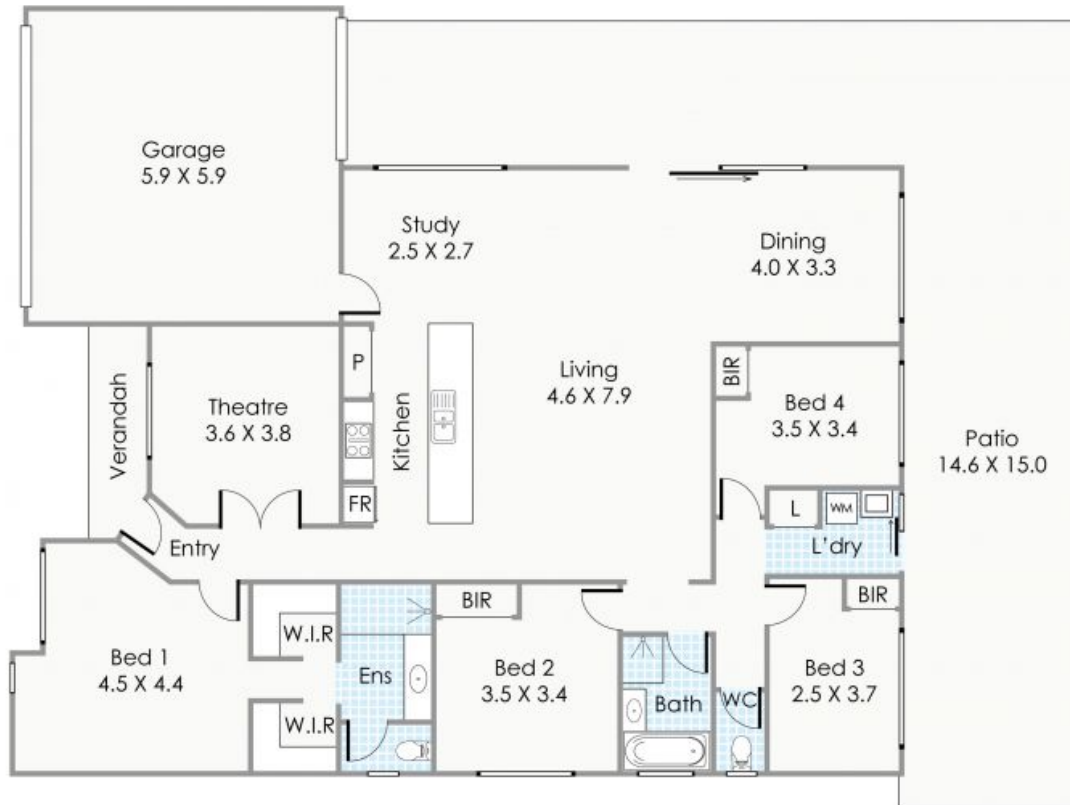
Features Include:

- Master bedroom with walk in robes and private en-suite
- Three generously size bedrooms with build in robes
- Stylish bathrooms
- Stone island benchtop kitchen with ample cabinets and storage
- Spacious theatre room
- Large garden shed
- Close proximity to the local schools, park!

Price: \$SOLD

Council Rates: \$2,800.00/year (approx)

Water Rates: \$1,295.46/year (approx)



Approximate Areas

Residence:	181m ²
Garage:	38m ²
Patio:	82m ²
Verandah:	5m ²
Total Area:	306m²

This floorplan is for illustration purposes only to show the layout of the property. Whilst every effort has been made to ensure the accuracy of this floor plan, all measurements, and any other information shown are an approximate interpretation only. Measurements and total areas do not include or account for wall thickness or roof area under eaves. Crib Creative will not be held liable or responsible for any error, omission, misrepresentation or use of any information shown on the final floor plan. Not to be used for any other purpose. www.cribcreative.com.au



17 Binnia Mews, Harrisdale