



30A McManus Street WILSON, WA



4



2



2

## BRAND NEW HOMES IN RIVERSIDE LOCALE!

Architecturally designed with an incredible floor plan, superior quality fit out and outstanding attention to detail, these two recently completed properties are guaranteed to impress!

Situated in close proximity to both the Canning River foreshore and Curtin University, these truly remarkable residences boasts four great sized bedrooms, two stylishly appointed bathrooms, an expansive open plan living area, comprising kitchen, meals and family.

The main living space seamlessly integrates indoor and outdoor living and leads to the private alfresco area. Quality fittings and fixtures are found throughout this most impressive residence including Porcelain tiling, LED lighting, stone bench tops and recessed high ceilings .

Features include but are not limited to:

- \*All three minor bedrooms are spacious with double built in robes.
- \*Separate W.C with vanity
- \*Double lock up garage with storage and shopp

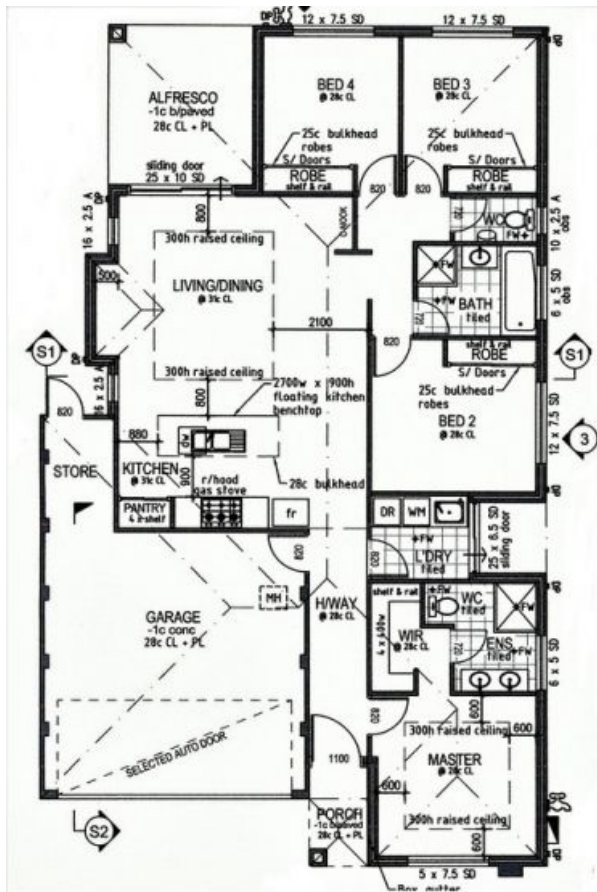
Price:

\$UNDER OFFER



**Sabrina Minic**

0433 299 908



**30A**



**30B**